

The driver installation guide for WIN 7 64bit

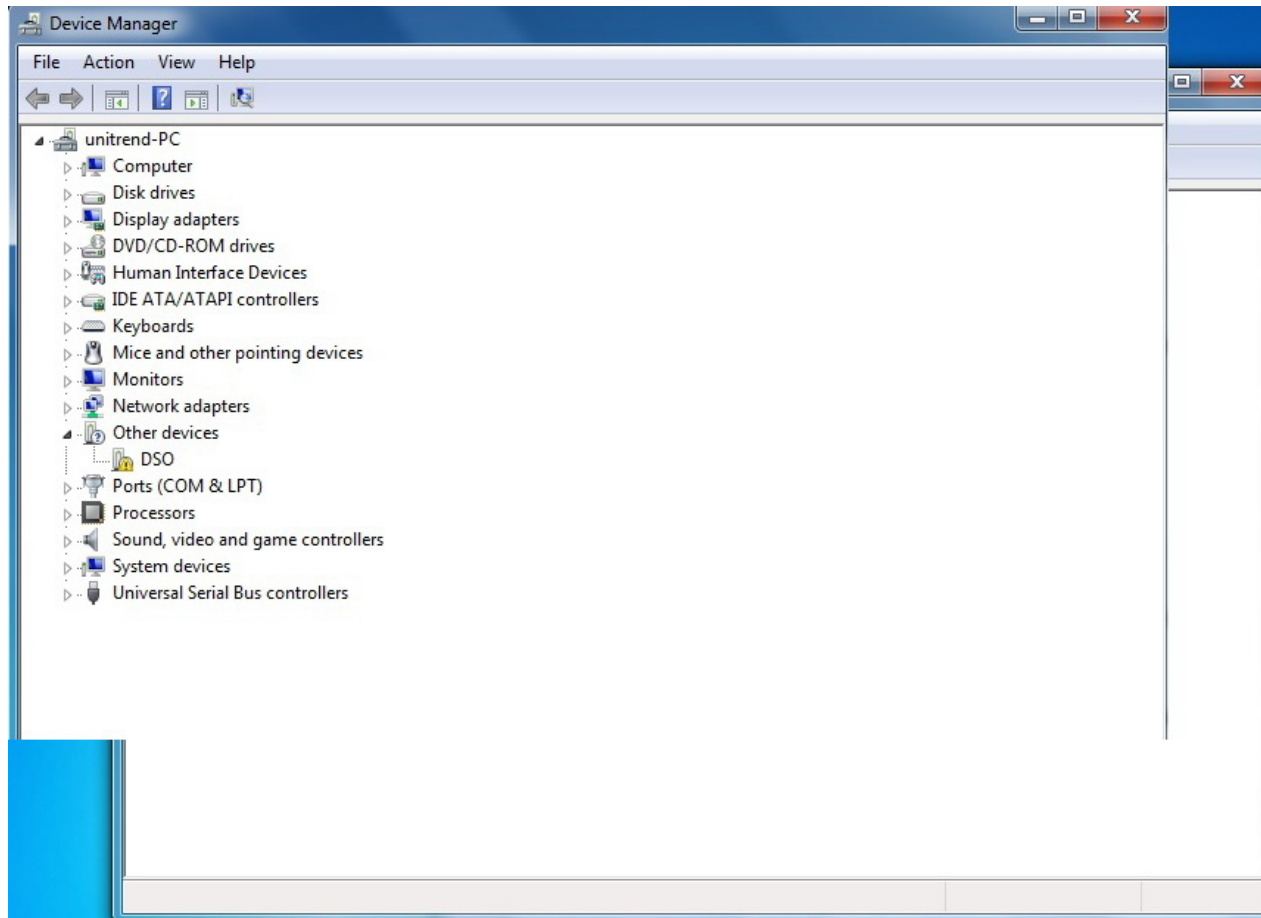
1. Install WIN 7_64bit_USB_Driver, as follow (1)



Win7_64bit_
USB_Driver

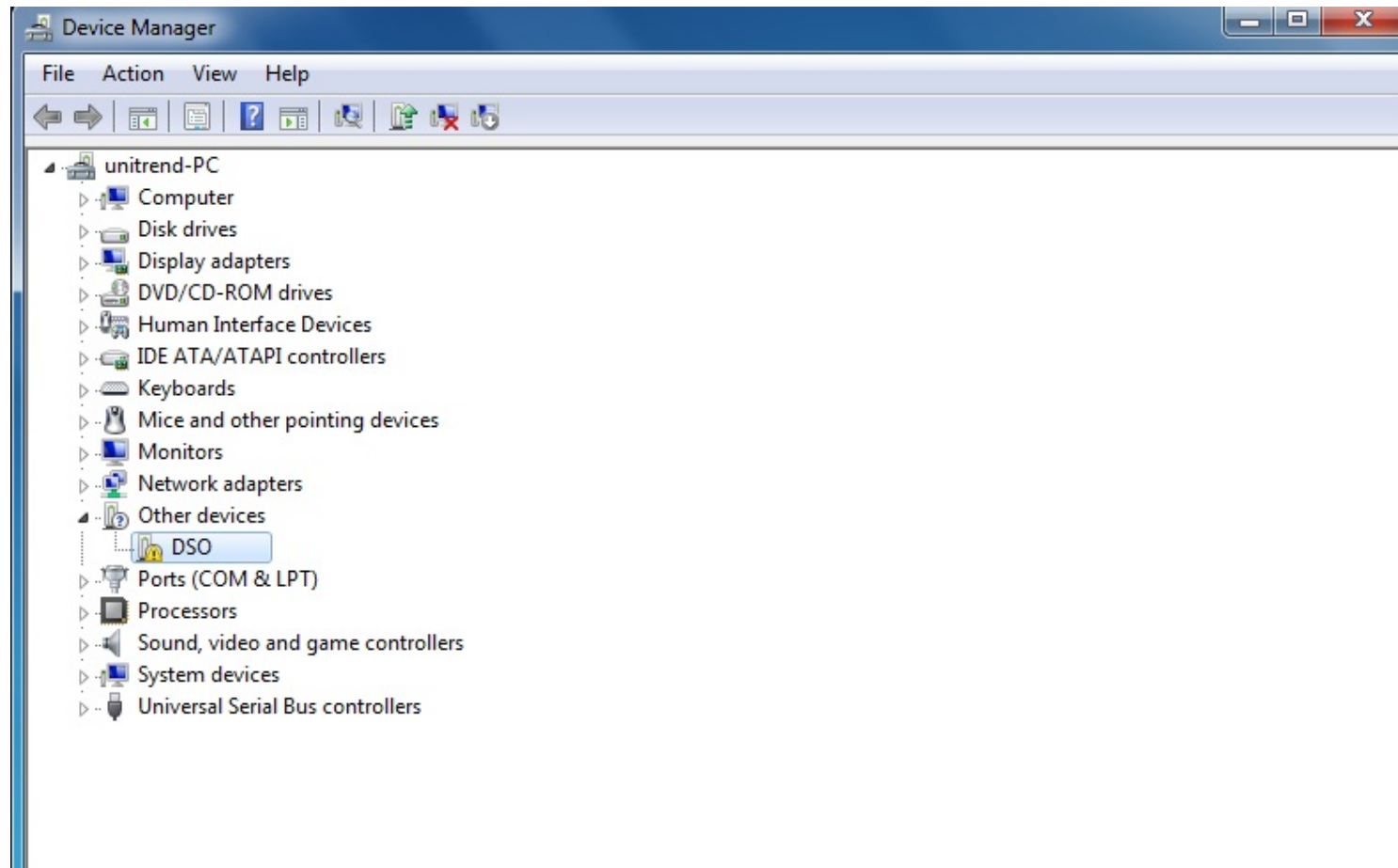
(1)

2. Connect oscilloscope to PC by USB cable, find the hardware from drive manager from PC, as follow (2);



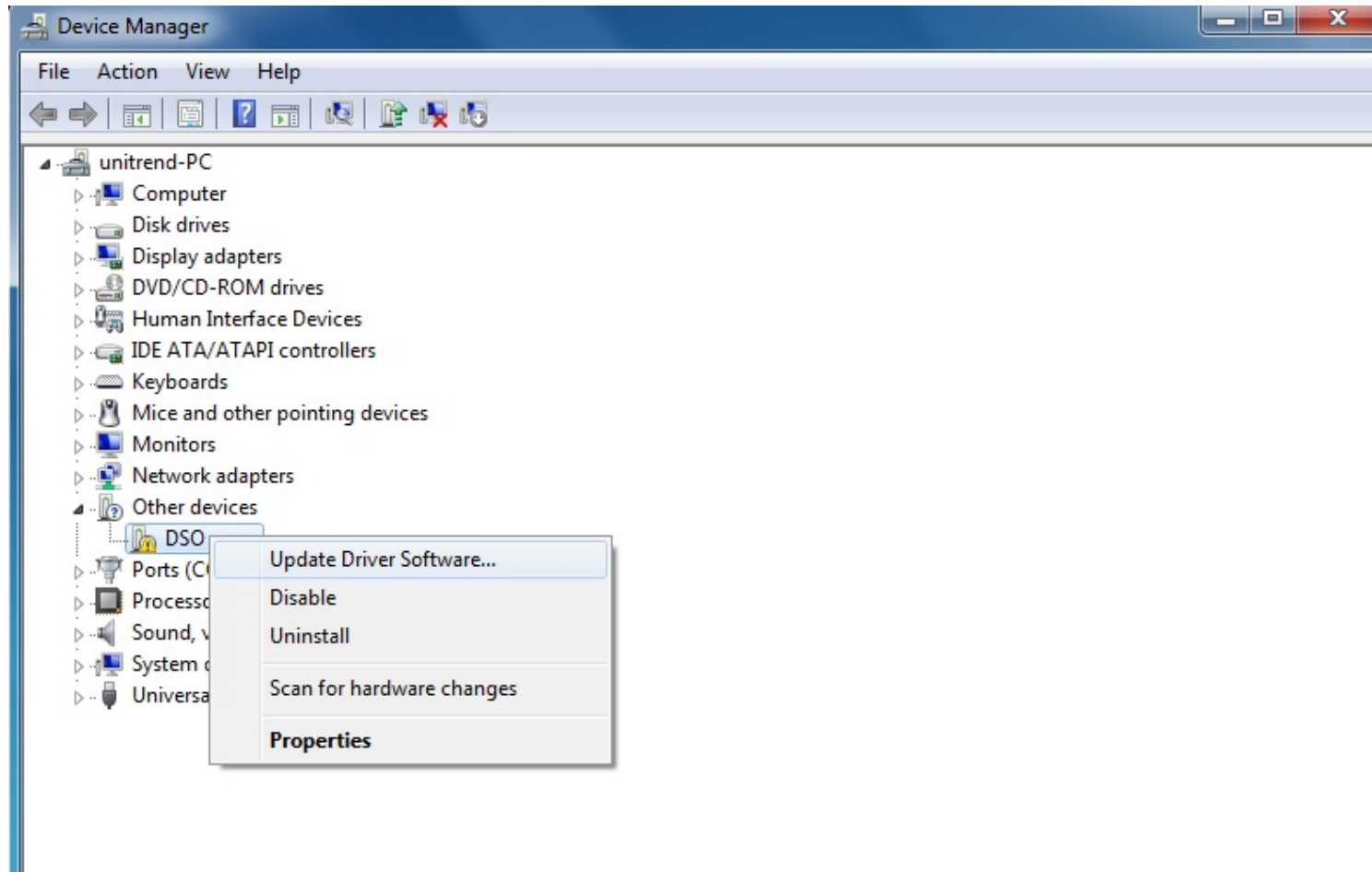
(2)

3. Make sure there have DSO hardware in device Manager, as follow (3)



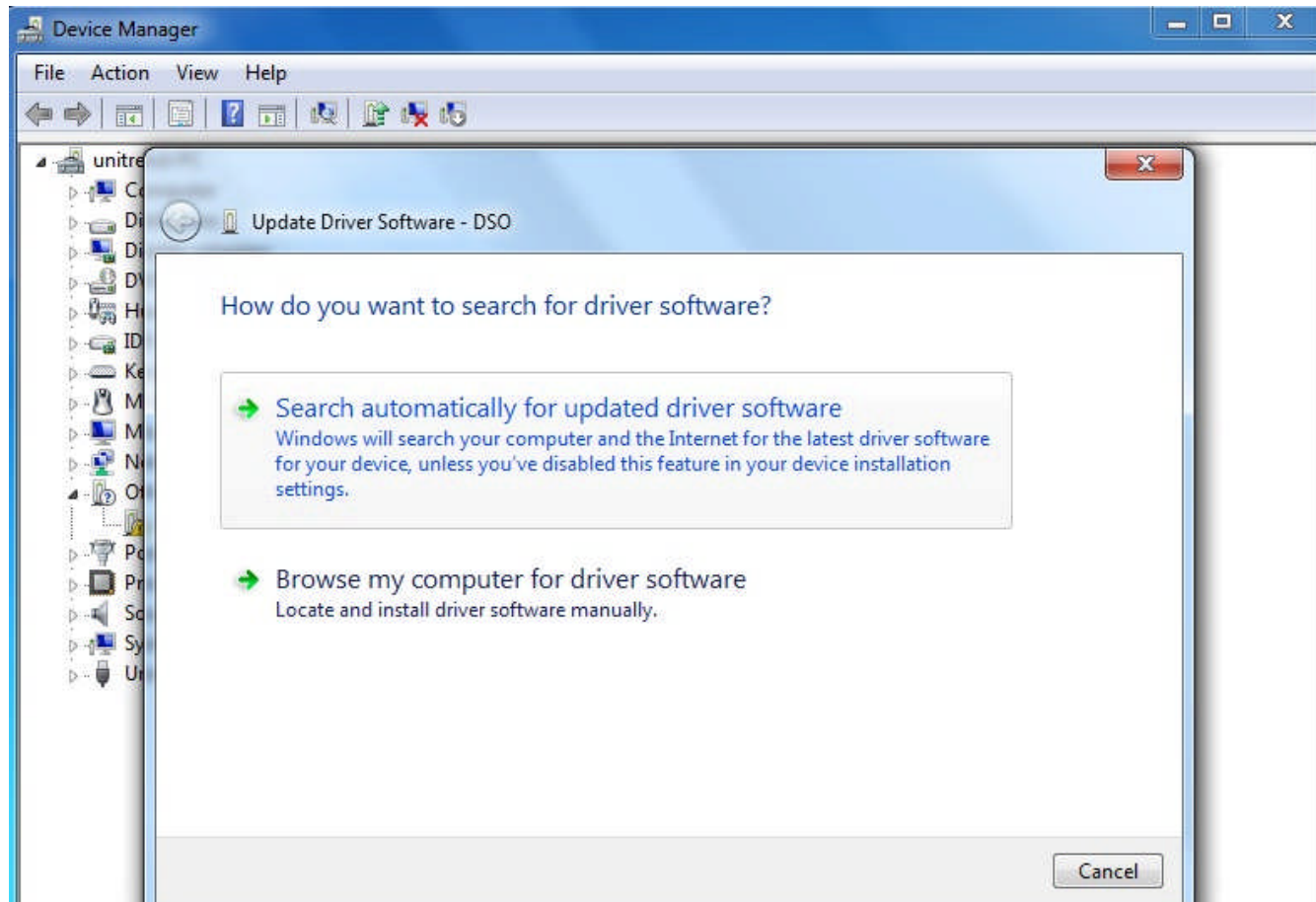
(3)

4. Install driver manually, click “Update Driver Software” as follow (4)



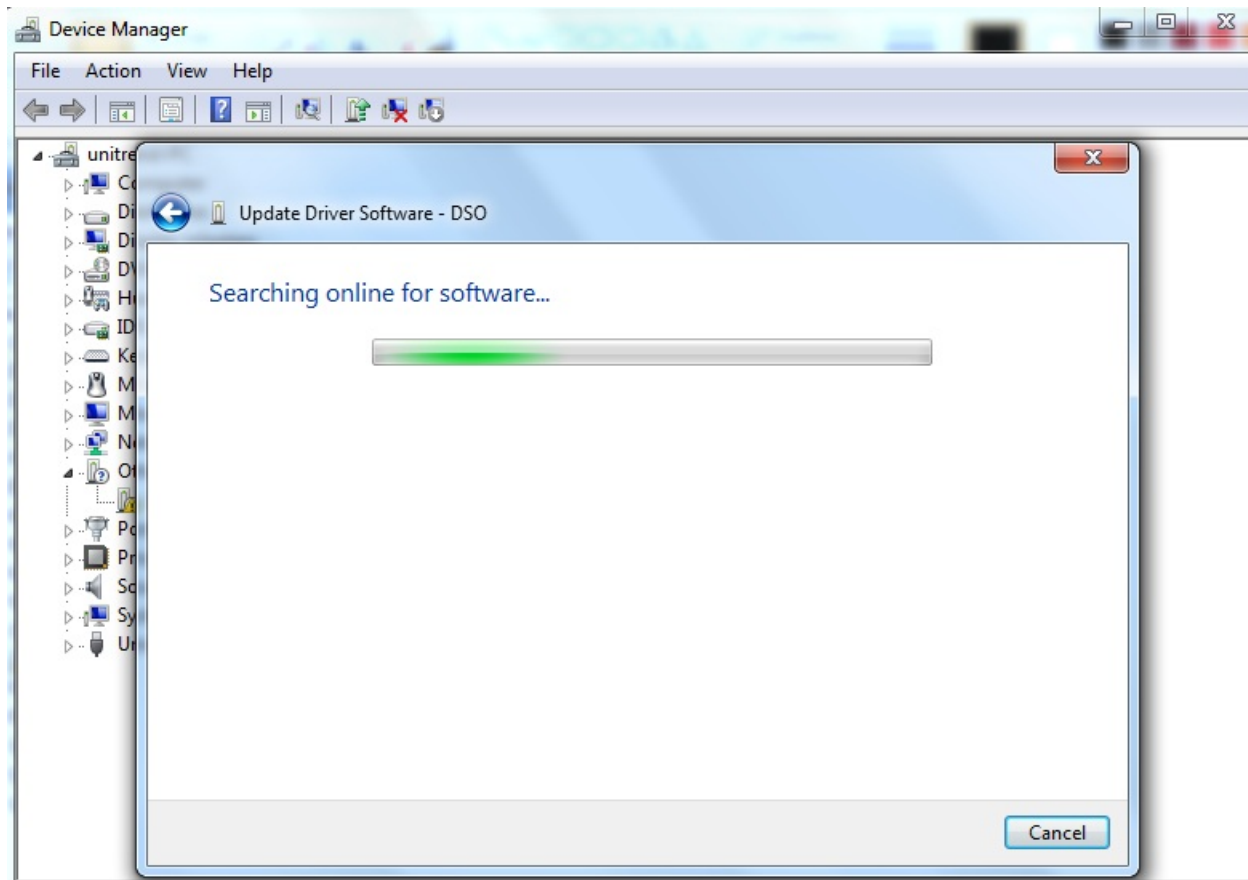
(4)

5. Click “Search automatically for updated driver software”, installation start, as follow (5);



(5)

6. Auto- installing .. As follow (6):



(6)

7. Finished installing, as follow (7)

